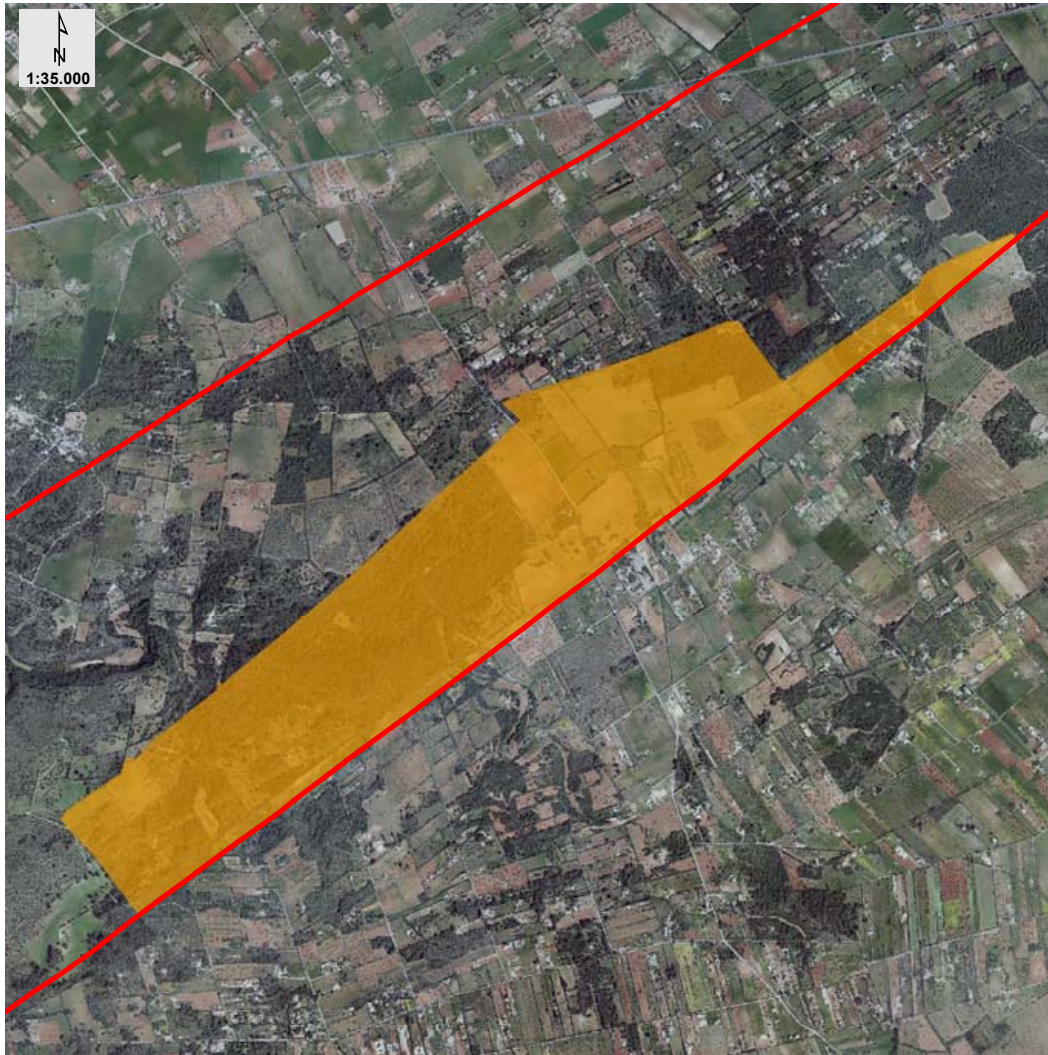
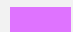




ANEXO III: PLANEAMIENTO TERRITORIAL

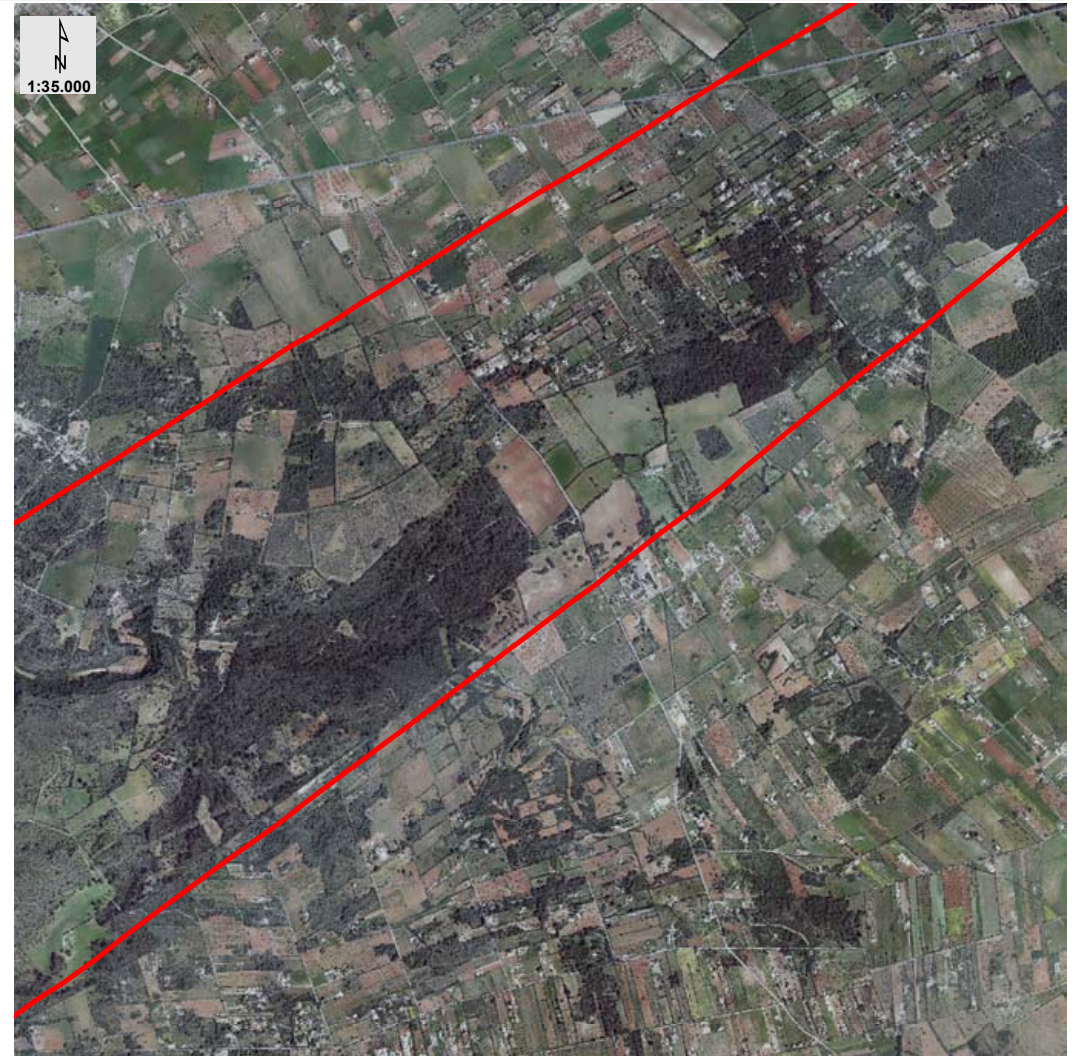
ALGAIDA



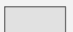


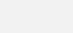



CLASIFICACIÓN



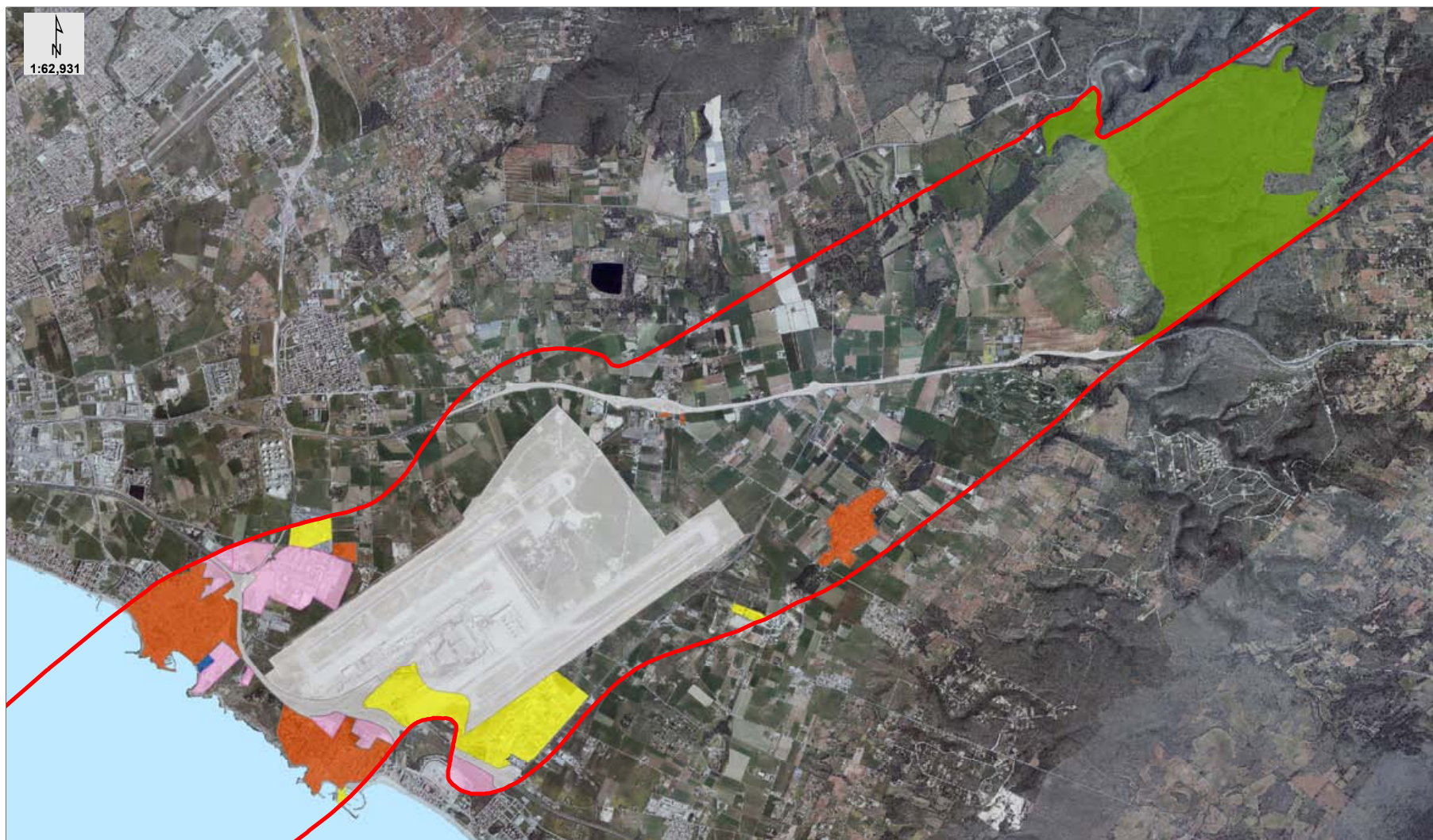
-  SUELO URBANO
-  SUELO URBANIZABLE
-  SUELO NO URBANIZABLE




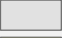



CALIFICACIÓN



- | | | |
|---|--|---|
|  RESIDENCIAL |  DOTACIONAL DOCENTE |  SISTEMA GENERAL DE INFRAESTRUCTURAS |
|  INDUSTRIAL |  DOTACIONAL SANITARIO |  SISTEMA GENERAL DE SEGURIDAD |
|  TERCIARIO |  OTROS EQ. | |
|  ESPACIOS LIBRES | | |

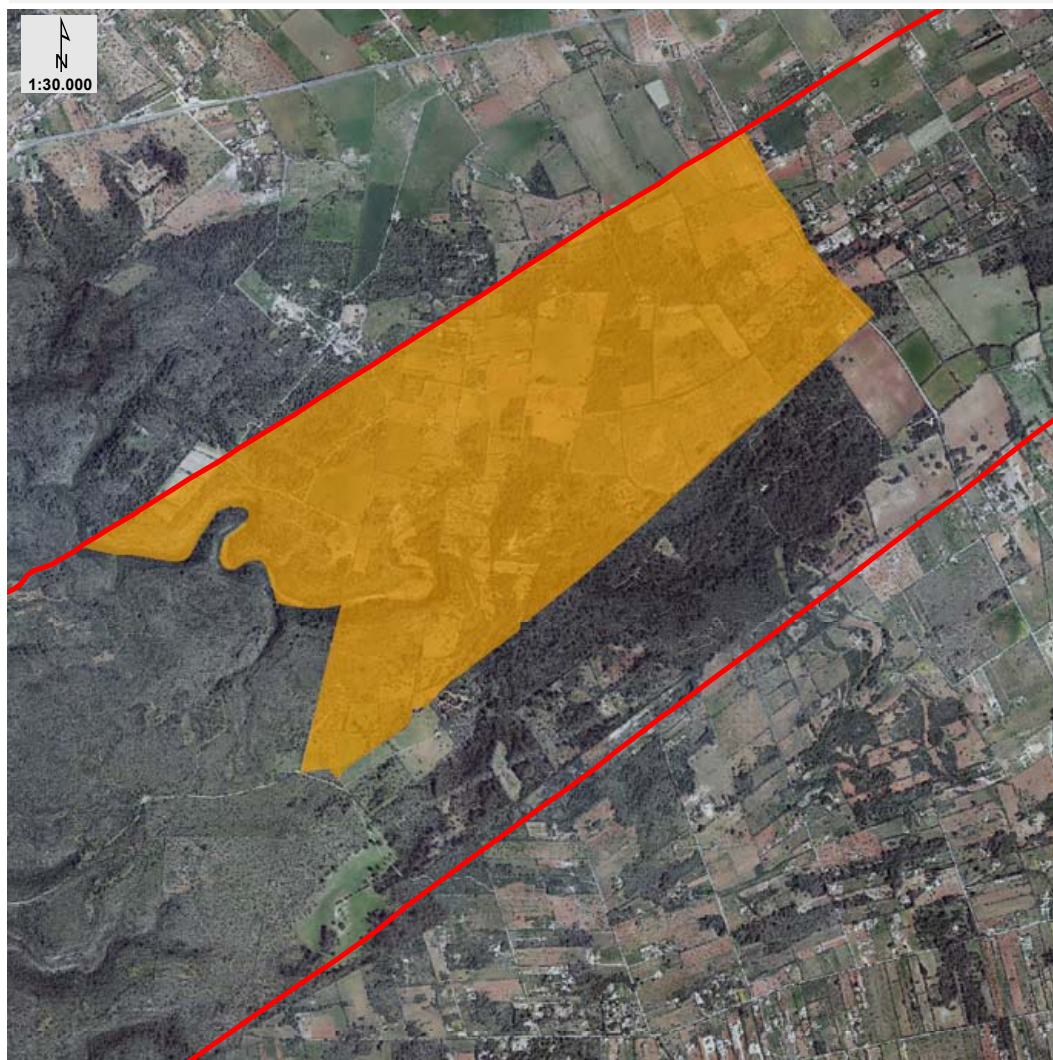
ZONIFICACIÓN ACÚSTICA

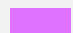
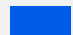



- | | | | |
|---|---------------------------|---|--------------------------------|
|  | RESIDENCIAL |  | SANITARIO, DOCENTE Y CULTURAL |
|  | INDUSTRIAL |  | INFRAESTRUCTURAS DE TRANSPORTE |
|  | RECREATIVO Y ESPECTÁCULOS |  | ESPACIOS NATURALES |
|  | TERCIARIO | | |

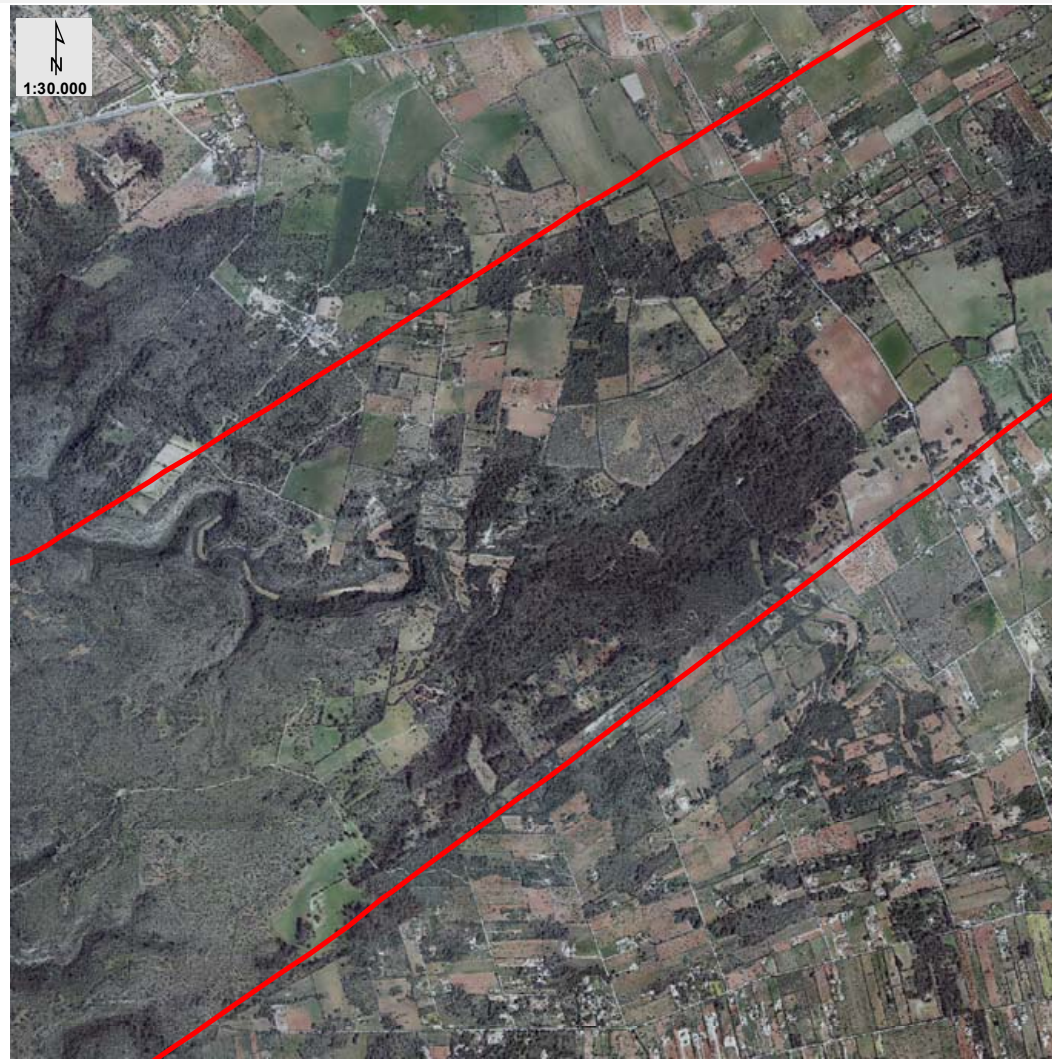
SANTA EUGÈNIA



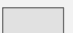

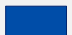
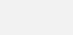



CLASIFICACIÓN



-  SUELO URBANO
-  SUELO URBANIZABLE
-  SUELO NO URBANIZABLE

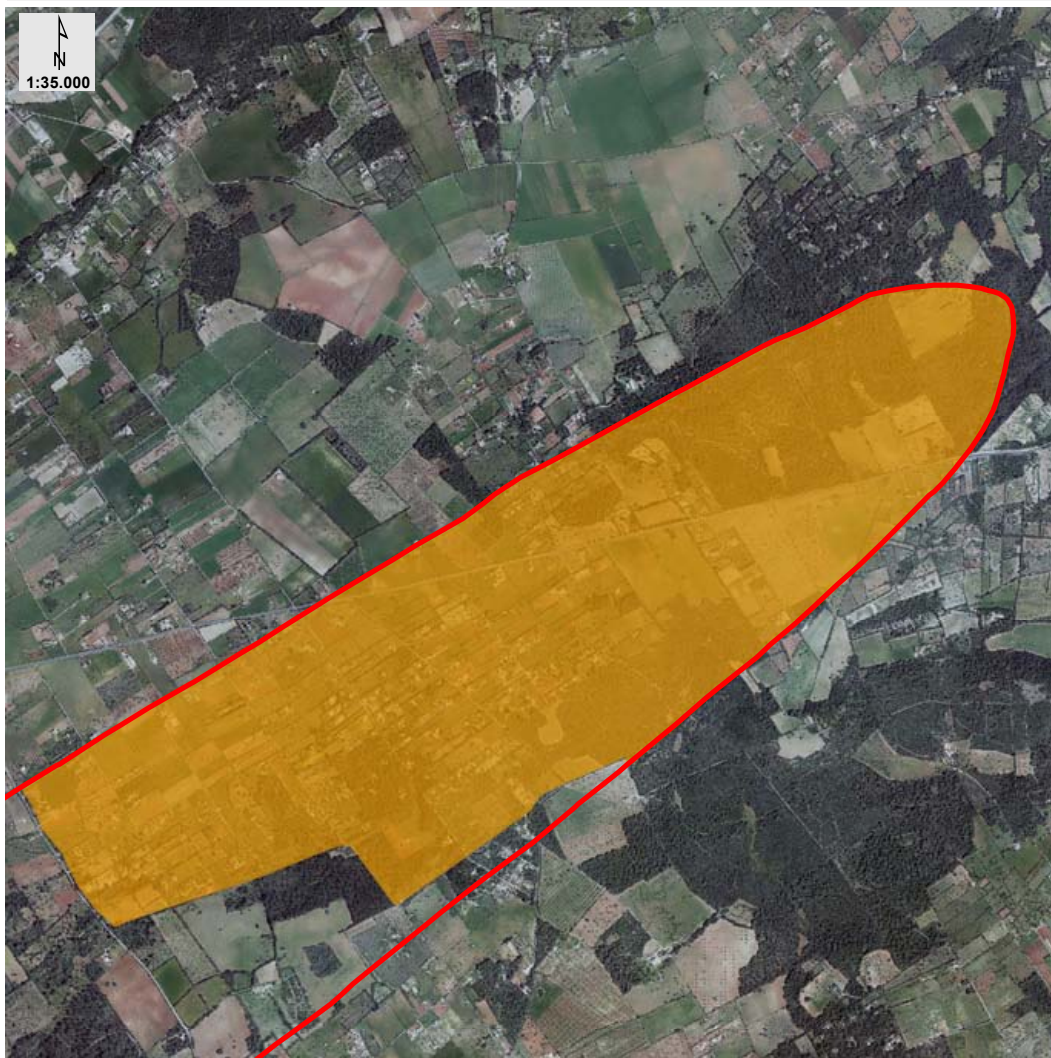
CALIFICACIÓN






- | | | |
|---|--|---|
|  RESIDENCIAL |  DOTACIONAL DOCENTE |  SISTEMA GENERAL DE INFRAESTRUCTURAS |
|  INDUSTRIAL |  DOTACIONAL SANITARIO |  SISTEMA GENERAL DE SEGURIDAD |
|  TERCARIO |  OTROS EQ. | |
|  ESPACIOS LIBRES | | |

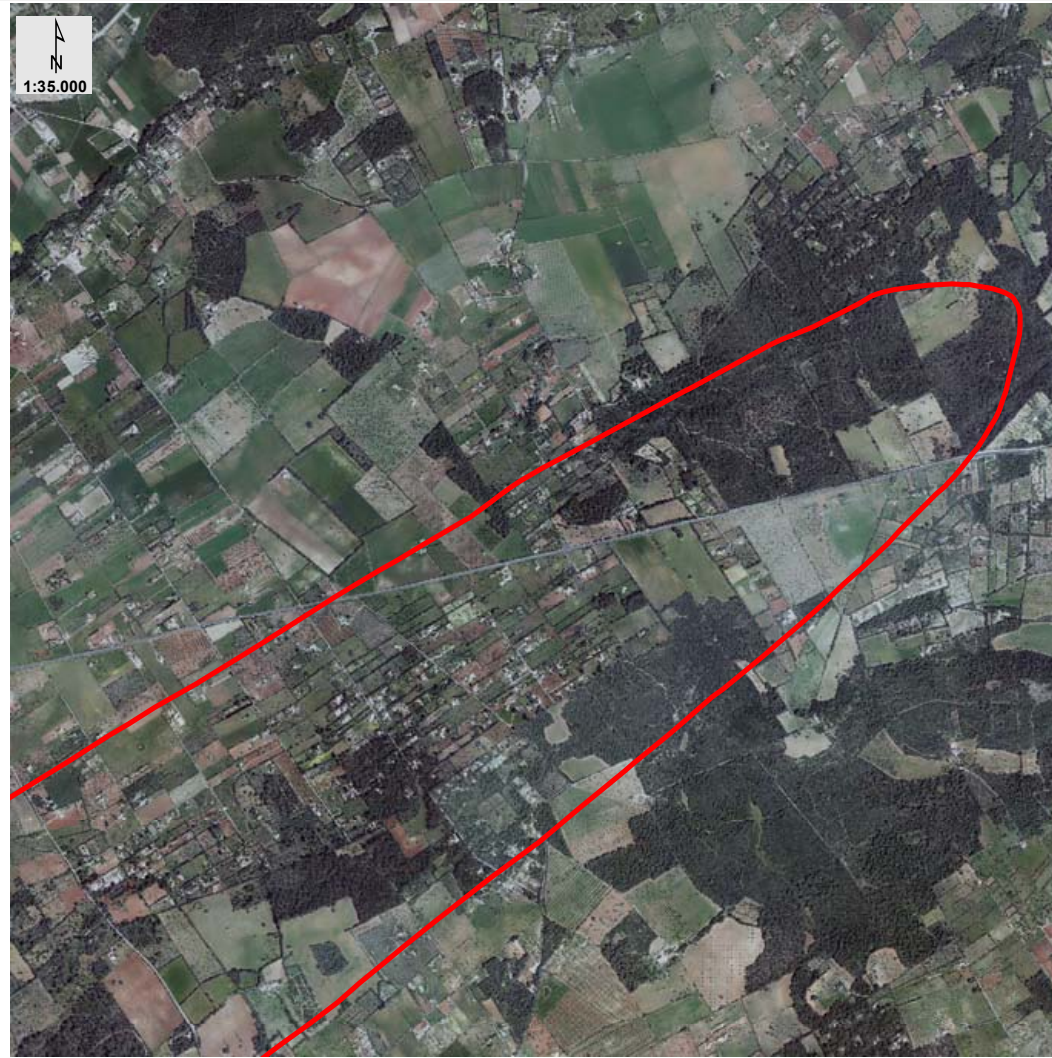
SENCELLES



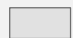


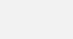



CLASIFICACIÓN



-  SUELO URBANO
-  SUELO URBANIZABLE
-  SUELO NO URBANIZABLE

CALIFICACIÓN



- | | | |
|---|--|---|
|  RESIDENCIAL |  DOTACIONAL DOCENTE |  SISTEMA GENERAL DE INFRAESTRUCTURAS |
|  INDUSTRIAL |  DOTACIONAL SANITARIO |  SISTEMA GENERAL DE SEGURIDAD |
|  TERCIARIO |  OTROS EQ. | |
|  ESPACIOS LIBRES | | |