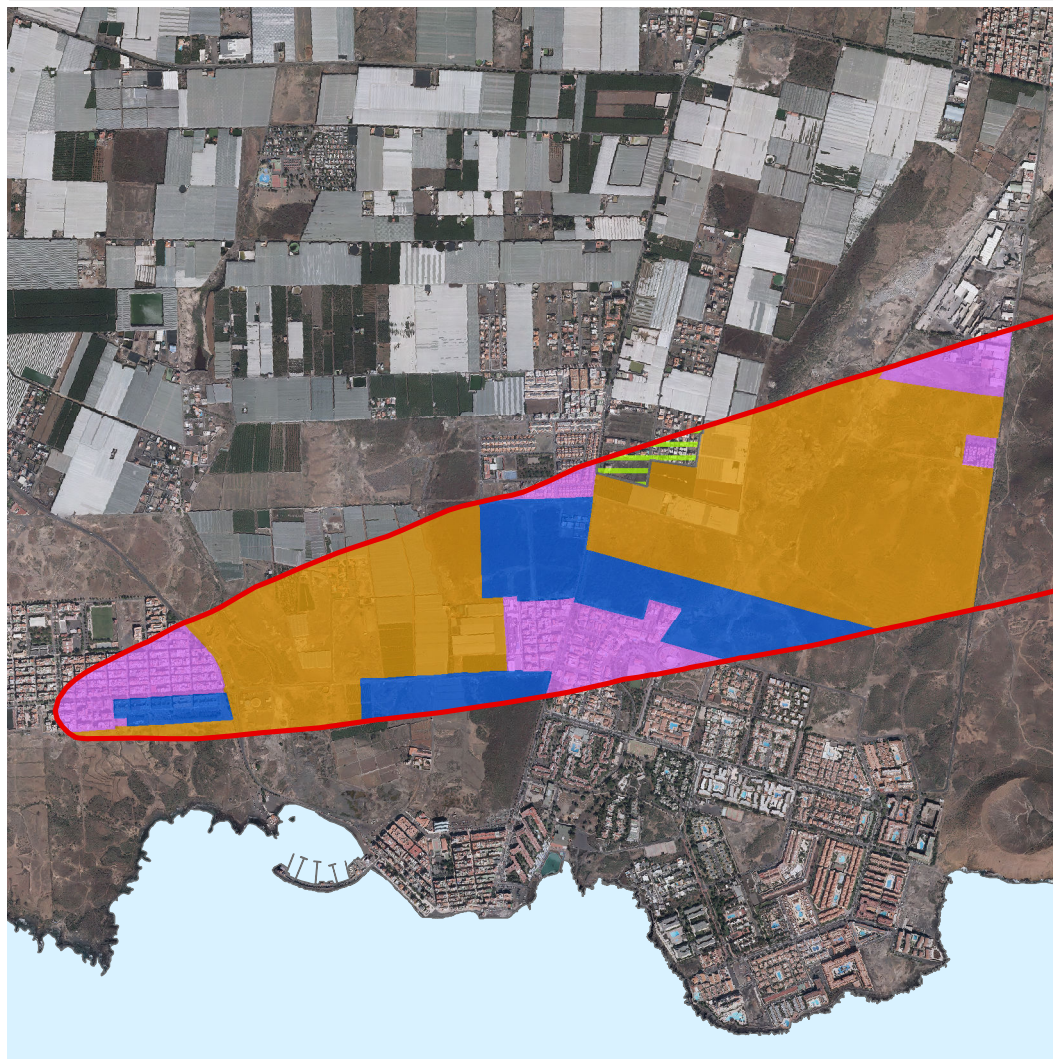



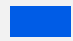

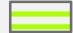


## ANEXO III: PLANEAMIENTO TERRITORIAL

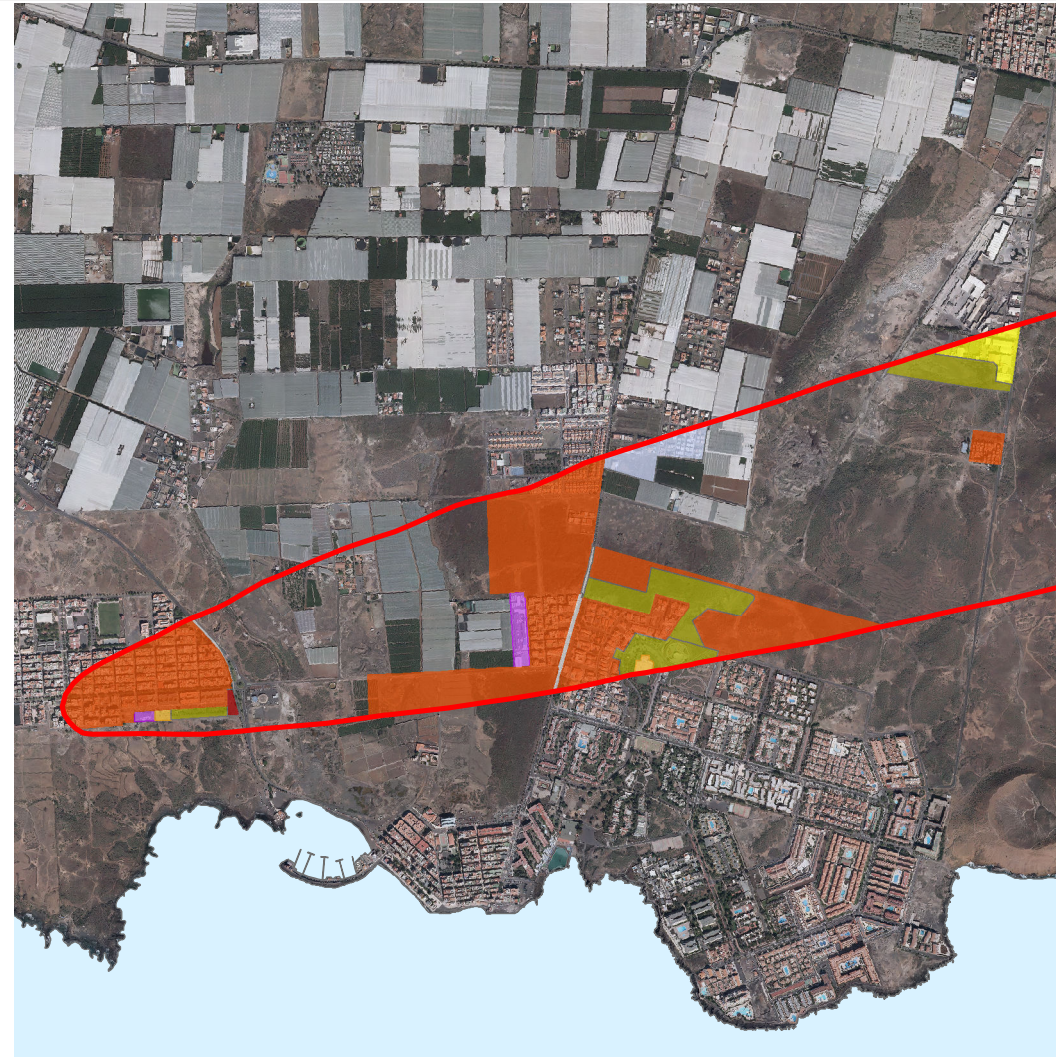
# ARONA

## CLASIFICACIÓN



-  SUELO URBANO
-  SUELO URBANIZABLE
-  SUELO RÚSTICO
-  ÁMBITO SUSPENDIDO

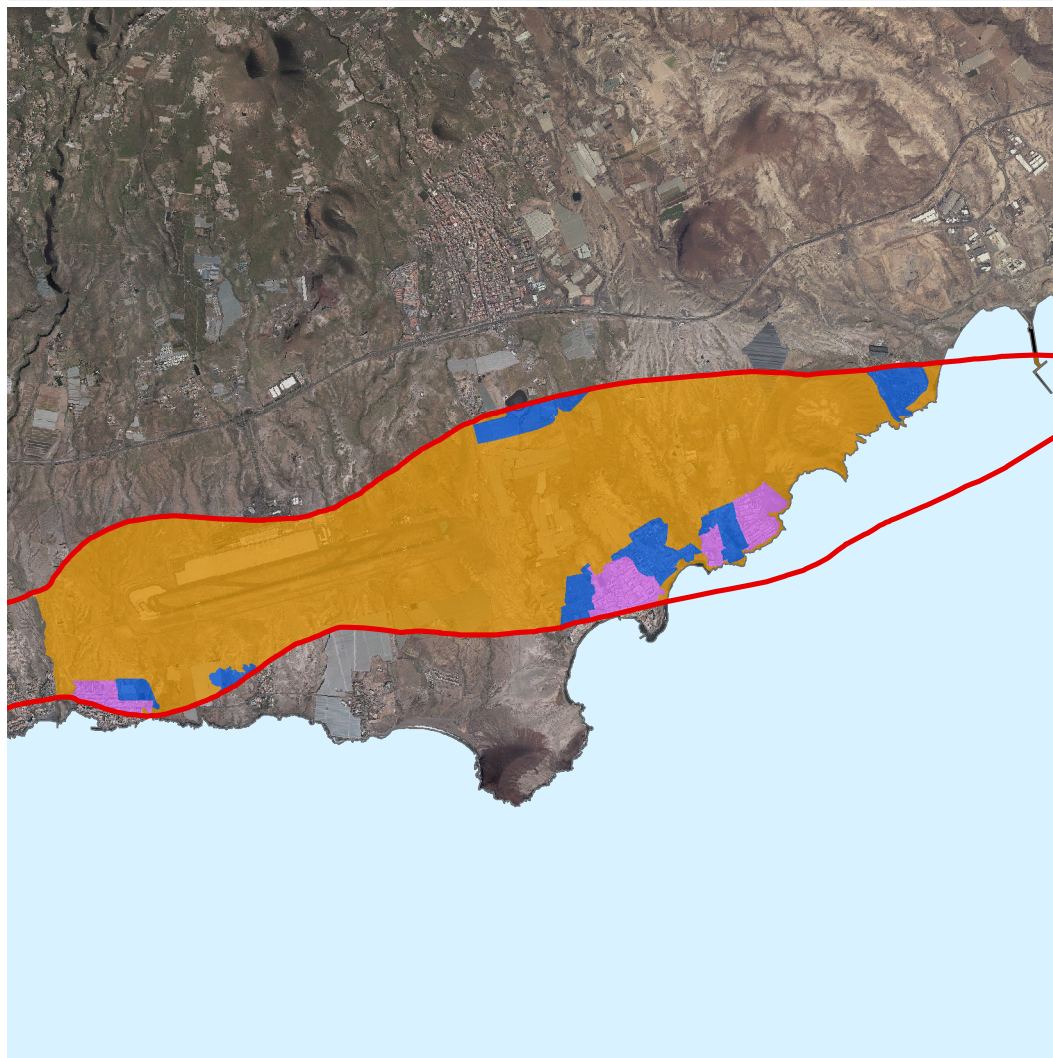
## CALIFICACIÓN


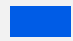

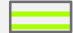


-  RESIDENCIAL
-  INDUSTRIAL
-  Terciario
-  ESPACIOS LIBRES
-  TURÍSTICO
-  EQ. EDUCATIVO
-  EQ. SANITARIO-ASISTENCIAL
-  EQ. DEPORTIVO
-  OTROS EQ.
-  RELIGIOSO
-  INFR. AEROPORTUARIA
-  OTRAS INFRAESTRUCTURAS

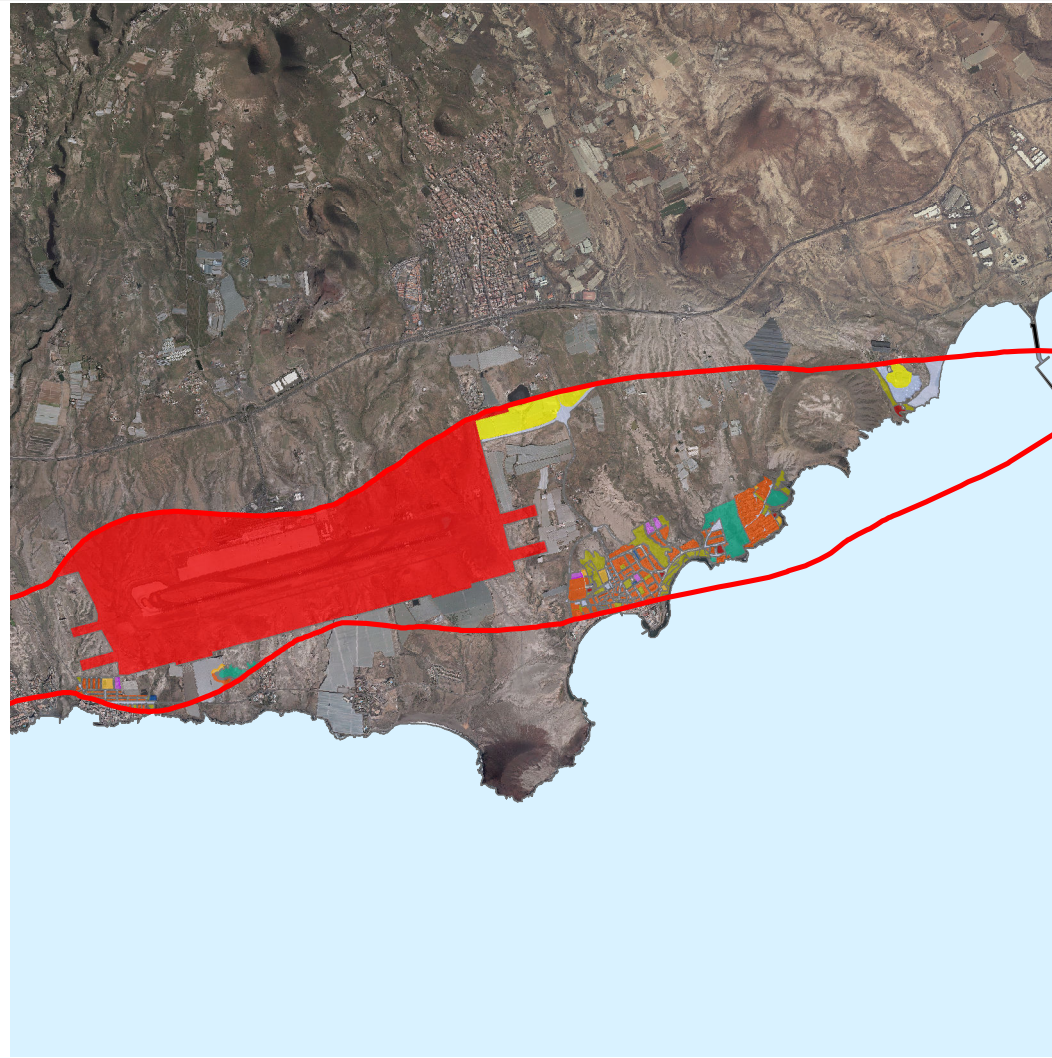
# GRANADILLA DE ABONA

## CLASIFICACIÓN



-  SUELO URBANO
-  SUELO URBANIZABLE
-  SUELO RÚSTICO
-  ÁMBITO SUSPENDIDO

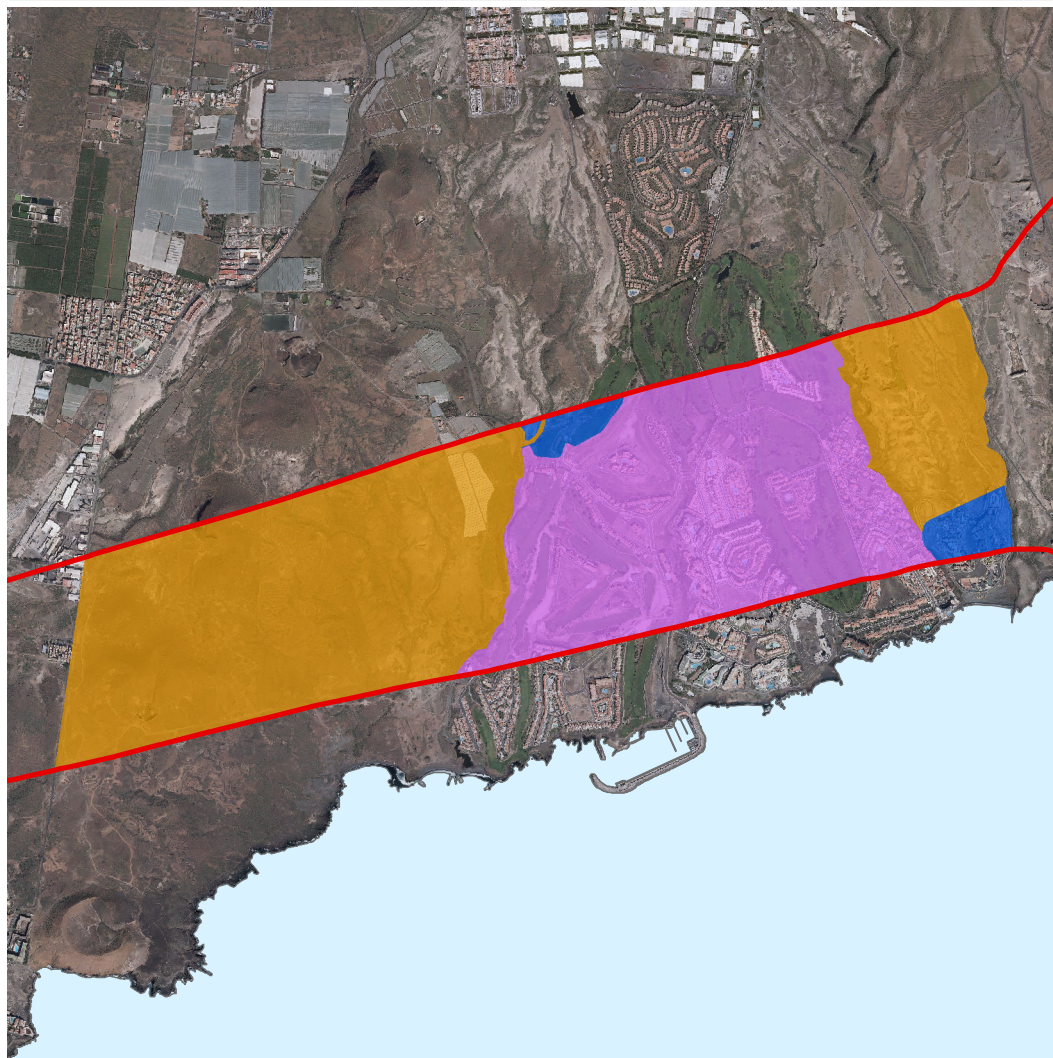
## CALIFICACIÓN


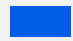

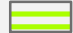


-  RESIDENCIAL
-  INDUSTRIAL
-  Terciario
-  ESPACIOS LIBRES
-  TURÍSTICO
-  EQ. EDUCATIVO
-  EQ. SANITARIO-ASISTENCIAL
-  EQ. DEPORTIVO
-  OTROS EQ.
-  RELIGIOSO
-  INFR. AEROPORTUARIA
-  OTRAS INFRAESTRUCTURAS

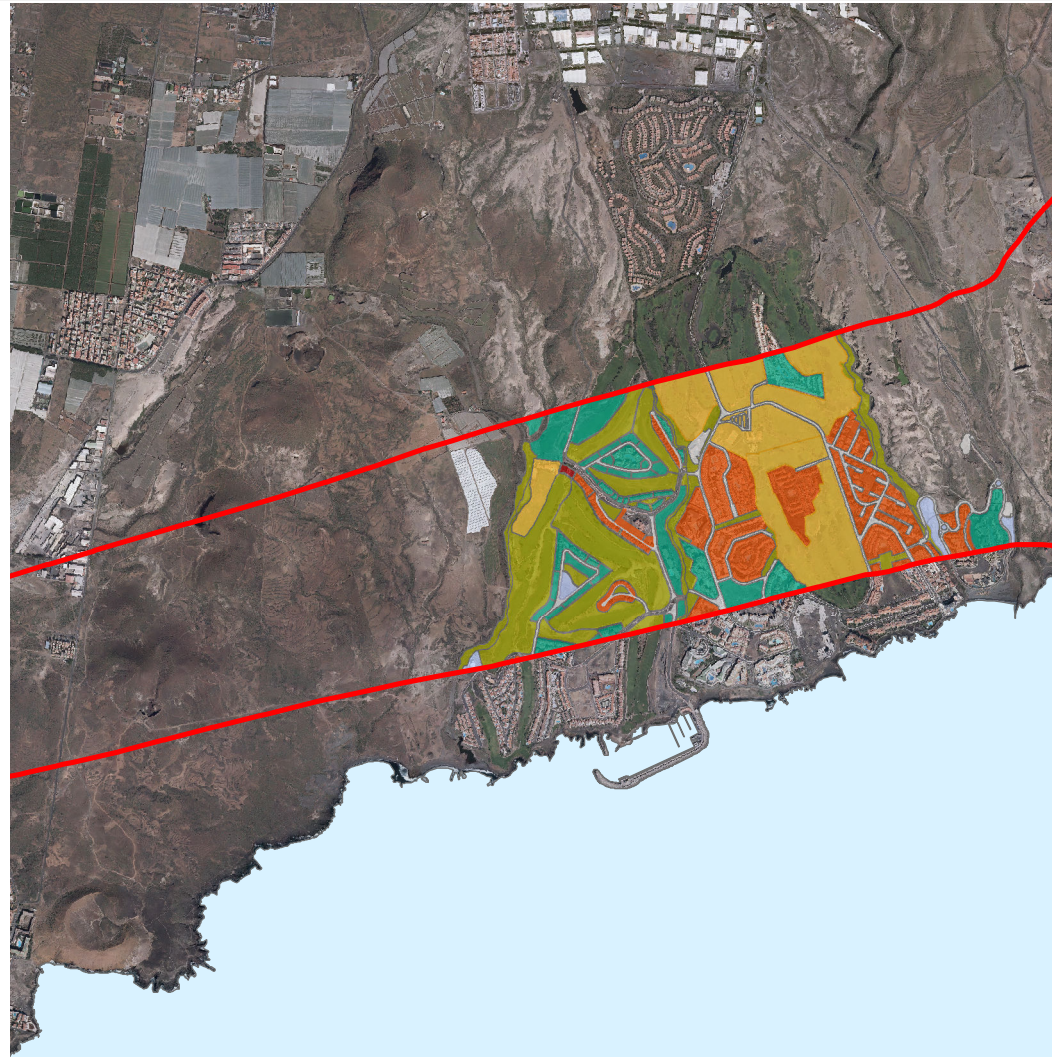
# SAN MIGUEL DE ABONA

## CLASIFICACIÓN



-  SUELO URBANO
-  SUELO URBANIZABLE
-  SUELO RÚSTICO
-  ÁMBITO SUSPENDIDO

## CALIFICACIÓN



- |   |   |  |
|---|---|--|
|  RESIDENCIAL     |  TURÍSTICO                 |  OTROS EQ.              |
|  INDUSTRIAL      |  EQ. EDUCATIVO             |  RELIGIOSO              |
|  TERCIARIO       |  EQ. SANITARIO-ASISTENCIAL |  INFR. AEROPORTUARIA    |
|  ESPACIOS LIBRES |  EQ. DEPORTIVO             |  OTRAS INFRAESTRUCTURAS |